

LOSING OUR FOOD LANDS

Gunns needs more than 400,000 ha of plantations as close to the mill as possible. Using federal MIS they are converting our food-producing farms to trees. Note map shows plantations as at 2000. The area has increased by 30% plus since that time.

WATER UNDER PRESSURE

Tree plantations need more water than Agricultural cropping (+2MI/ha/yr). The growing plantation estate is draining water from our catchments and making it harder for food producers to survive.

DECLINE OF RURAL CENTRES

Compared to food farms with annual crops which put income through local centres, tree farms designed for remote investors create a major cash flow problem for rural centres. Farms produce annual crops and income whereas trees only produce income at harvest, about once every 15 years.

TAMAR

Bounded by hills that trap inversion layer

FOOD THREATS

Mill waste into slow flushing and shallow Bass Strait containing many commercial fish areas. Impacts not studied by State govt.

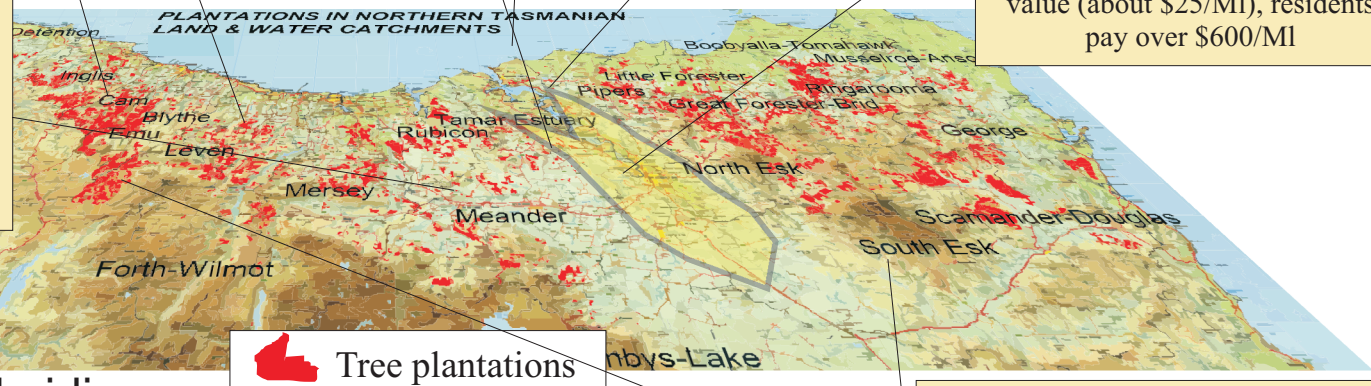
HIGH RISK LOCATION

Upwind of about 80,000 people at head of valley infamous for particles trapped in inversions

MILL WATER

Mill will take between 26 Gl to 40 Gl per year from W. Tamar drinking water supply. Gunns will only pay a fraction of its value (about \$25/MI), residents pay over \$600/MI

Prevailing winds



Tree plantations

Some opportunity costs and subsidies

Losses to farming and processing income - some percentage of	\$2.5 billion/yr
Losses to tourism	some percentage of \$1 billion/yr
Losses to fine foods, wineries	unknown
Risks to fishing industry	unknown
Costs of water - about 400 Gl/yr used by trees - @ \$100 MI =	\$40 million/yr
Damage to roads/bridges	\$20 million/yr
Costs of health damage and road deaths	unknown
Costs of subsidies - over \$80 million/yr	\$80 million+/yr
Special infrastructures (e.g. road & rail)	\$120 million +
Lost value of trees as carbon sink @ \$15 per tonne	\$60 million/yr
Costs to public of losses on timber and delivery costs	kept secret from public

CLIMATE CHANGE

One of the main contributors to climate change is deforestation. This 'world scale' mill will deforest Tasmania at an unprecedented rate while burning of all remaining wood will release all of the stored carbon.

Some pulp mill risks and costs

Infographic by A Better Australia

26 November 2007

<http://www.abetteraustralia.com>